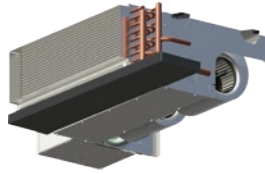


Fan-Coils, VAV Boxes, Blower Coils, and Air Handlers

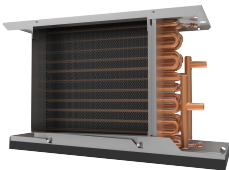
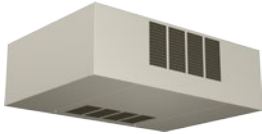
Fan-Coils

HLF Horizontal,
Low-Profile,
Free-Return
200-1200 CFM



HLP Horizontal,
Low-Profile,
Plenum-Return
200-1200 CFM

HLE Horizontal,
Low-Profile,
Exposed-Cabinet
200-1200 CFM



HPF Horizontal,
High-Performance,
Free-Return
600-2400 CFM

HPP Horizontal,
High-Performance,
Plenum-Return
600-2400 CFM



HPE Horizontal,
High-Performance,
Exposed-Cabinet
600-2000 CFM



CDV Vertical,
High-Performance
400-2000 CFM

VHE Vertical, Hi-Rise,
Exposed-Cabinet
350-1200 CFM



VHA/VHB Vertical,
Hi-Rise, Tandem Units
350-1200 CFM

VHC Vertical, Hi-Rise,
Concealed-Cabinet
VHM - Primary
VHS - Secondary
350-1200 CFM



VFE Vertical, Floor,
Exposed-Cabinet
250-1200 CFM

VFS Vertical, Floor,
Slope-Top
250-1200 CFM



VFC Vertical, Floor,
Wall-Mount, Concealed
250-1200 CFM

VLE Low-Height,
Vertical, Wall-Mount,
Exposed
200-600 CFM



VLC Low-Height,
Vertical,
Wall-Mount,
Concealed
200-600 CFM

Fan-Coils, VAV Boxes, Blower Coils, and Air Handlers

Blower-Coil Units



HDD Horizontal,
Direct-Drive
150-5200 CFM

VDD Vertical,
Direct-Drive
150-5200 CFM



VR Vertical,
Rear-Return,
Reduced-Footprint,
Belt-Drive,
800-3000 CFM

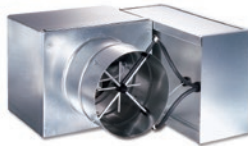
VB Vertical,
Bottom-Return,
Reduced-Footprint,
Belt-Drive,
800-3000 CFM



Air-Handling Units



MQL Modular Indoor
Air Handler
1000-8500 CFM



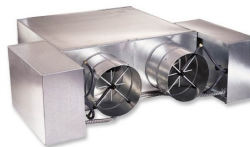
SDR Single-Duct
100-8000 CFM

SDL Single-Duct
Low-Height
600-4100 CFM



SGX Retrofit Unit
Supply & Exhaust
50-4000 CFM

DDR Dual Duct
100-4000 CFM

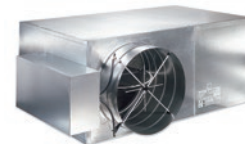


CFR Series-Flow,
Constant-Volume,
Fan-Powered
100-4600 CFM



CFRQ Series-Flow,
Constant-Volume,
Fan-Powered,
Extra-Outlet
200-3100 CFM

CFL Series-Flow,
Fan-Powered
Low-Height
100-1900 CFM



VFR Parallel-Flow,
Variable-Volume,
Fan-Powered
100-4100 CFM

VFL Parallel-Flow,
Fan-Powered
Low-Height
100-3000 CFM

