



# MULTI-ZONE MINI-SPLIT SYSTEMS

THE BEST IN COMFORT, EFFICIENCY, AND LUXURY.



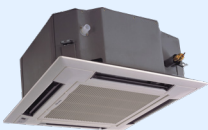
G R E E C O M F O R T . C O M



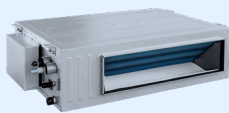
**MULTI+<sup>+</sup>** 21 SEER     **MULTI+<sup>+</sup>ULTRA** 23 SEER



**SUPER+<sup>+</sup>** 18 SEER     **SUPER+<sup>+</sup> MULTI ULTRA** 18 SEER



Ceiling  
Cassette



Slim Duct  
(High Static)



High-Wall



Floor/Ceiling



Console

# THE ULTRA SERIES

OPTIMAL PERFORMANCE  
IN THE MOST CHALLENGING  
CLIMATES...  
**FROM -31°F - 129°F**



Key Features	Multi 21+	Super+ Multi	Multi+ ULTRA	Super+ Multi ULTRA
Capacity Range (Nominal)	18K - 42K	48K - 56K	18K - 42K	48K
SEER / EER	Up to 22 / Up to 12.5	16 / Up to 9.55	23 / Up to 12.5	18 / 8.8
Energy Star <sup>®1</sup>	YES (Except for 42K)	NO	YES (18K and 24K)	NO
Compressor Type	GREE G10 / 2 - STAGE INVERTER		GREE G10 / 2 - STAGE / 3 - CYLINDER INVERTER	
HSPF / COP	Up to 11.5 / Up to 3.7	Up to 8.2 / Up to 3.6	Up to 10.5 / Up to 3.6	10 / 3.2
Sound Pressure Level	Down to 53 dB(A)	Down to 55 dB(A)	Down to 58 dB(A)	Down to 56 dB(A)
Cooling Temperature Range	0°F to 118°F	5°F to 118°F	0°F to 115°F	50°F to 129°F
Heating Temperature Range	-4°F to 75°F	-4°F to 75°F	-31°F to 75°F	-31°F to 81°F
Number of Zones	1 to 5	2 to 9	2 to 5	2 to 7
Self-Diagnosis	✓	✓	✓	✓
Branch Unit Modules	NO	✓	NO	✓
Intelligent Defrost	✓	✓	✓	✓
Electric Heater on Compressor Basepan	✓	✓	✓	✓
Compressor with Electric Heater	✓	✓	✓	✓

<sup>1</sup> With Non-Ducted Indoor Units Only, does not apply to Ducted Indoor Units

## GREE HEAT PUMPS, POWERED BY NEEDS.

- High efficiency
- Engineered to **reduce vibration**
- Variable speed for **precise control**
- **Protection** against power surges
- **Programmable sleep mode** for near-silent operation

